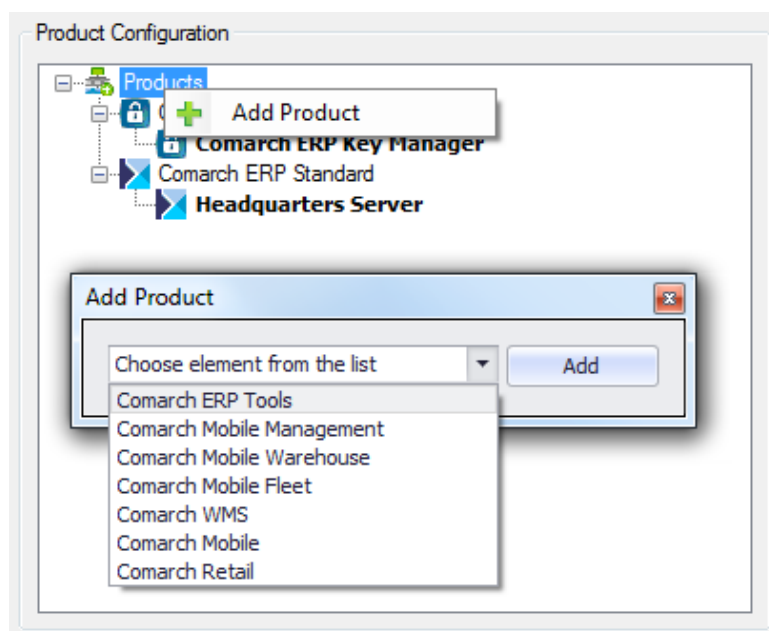


Add-ons wizard

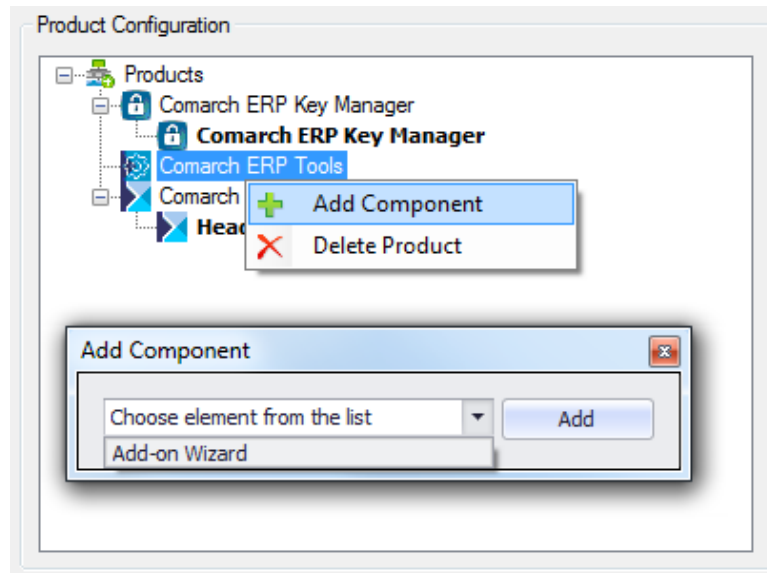
Add-on wizard is a tool which improves the creation of extensions for Comarch ERP Standard and Comarch POS products. Add-ons created in this way are adjusted to be propagated and installed in each subsidiary of a company structure via Comarch ERP Auto Update program.

In order to install add-on wizard, go to the menu *Configuration* → *Products* → *Add Product*. Finally, from a dropped-down list choose [**Comarch ERP Tools**].



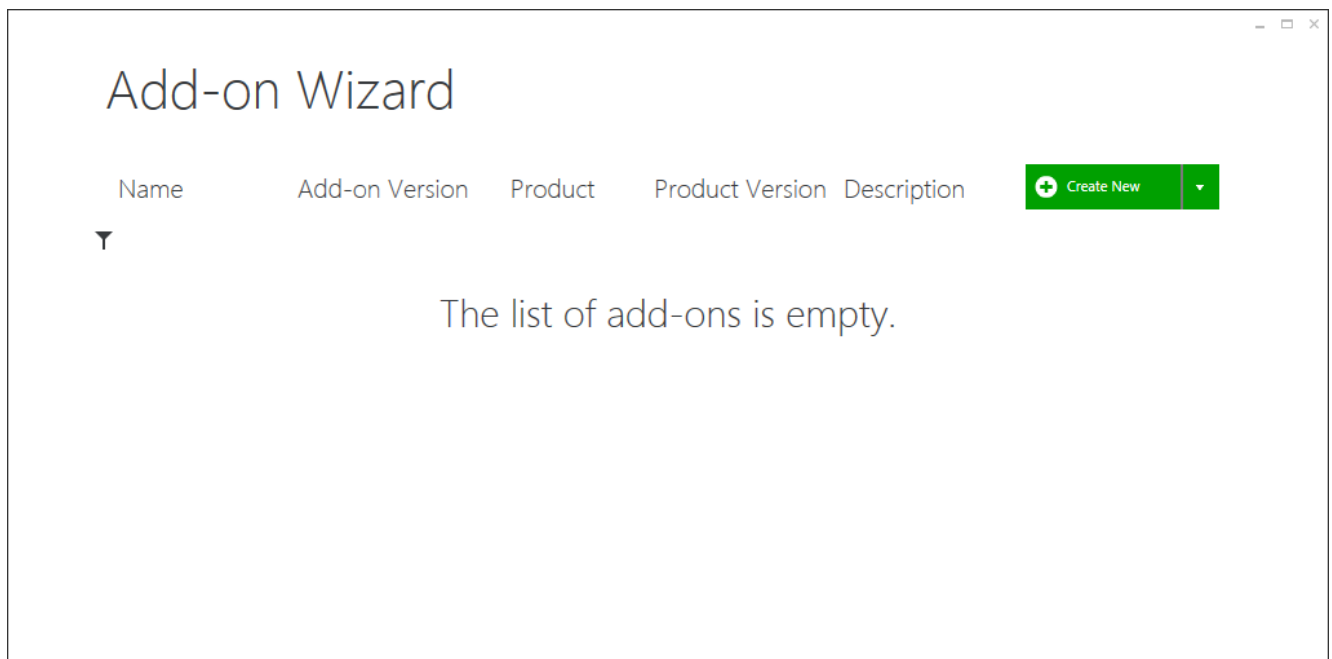
Product tree

Appropriate component can be added to a selected product. To do so, right click on *Comarch ERP Tools* → *Add Component* option and select the option [**Add-on Wizard**] from a dropped-down list.



Component tree

After configuring the component, you may proceed to downloading and installing it. After the installation and startup, the main window of Add-ons wizard appears.



Add-ons wizard main window

To go to the main menu of the wizard, it is necessary to right click on any place of the application.



Add-ons wizard main menu

From the level of the main menu, the following actions are available:

- Create New – starts new add-on creation process,
- Upload New – adds an add-on to the wizard's add-on list
- Configuration – opens application's configuration window
- Help – displays the help file